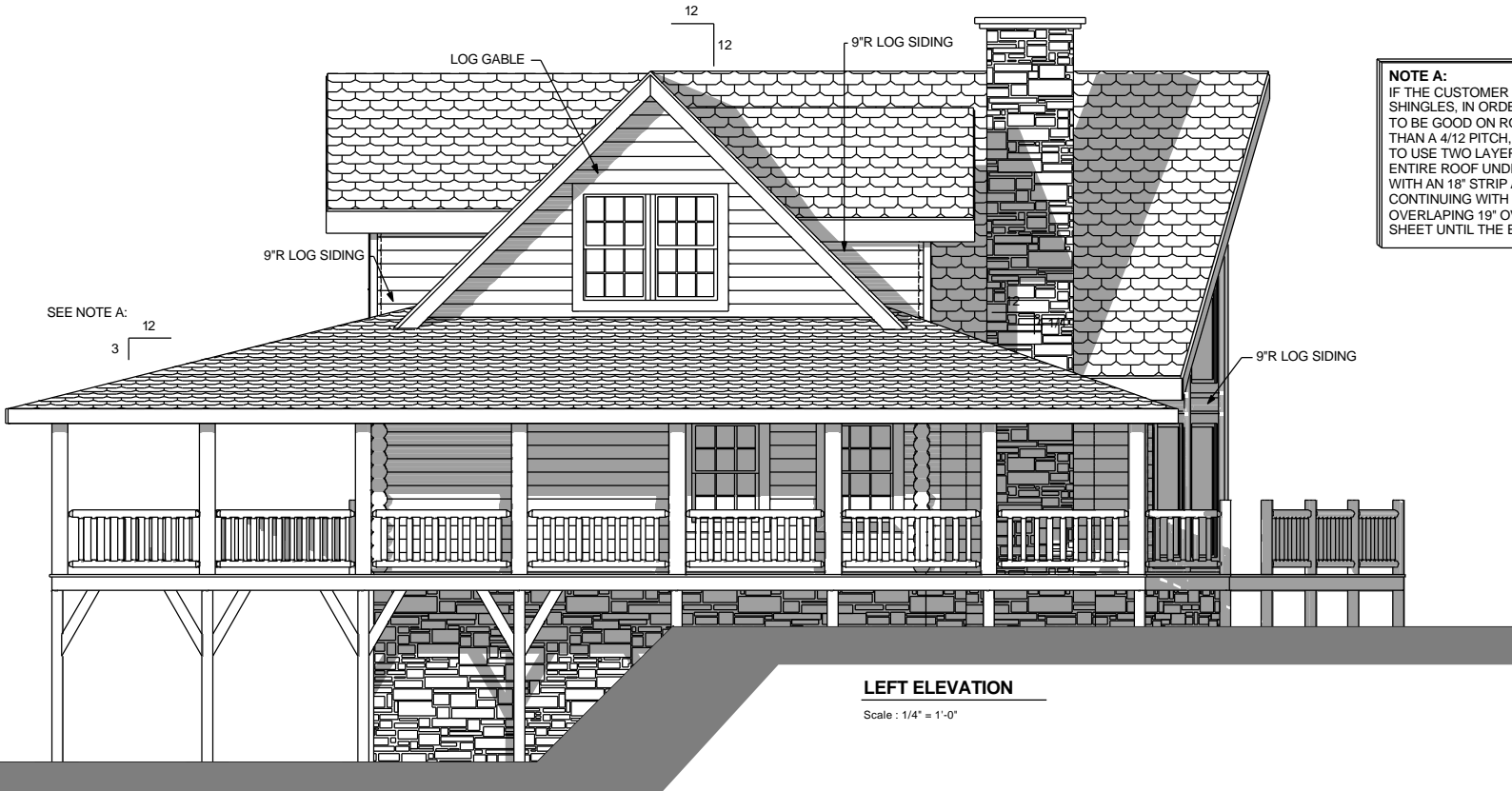


**FRONT ELEVATION**

Scale : 1/4" = 1'-0"



**LEFT ELEVATION**

Scale : 1/4" = 1'-0"

**NOTE A:**  
 IF THE CUSTOMER IS PURCHASING JBL S SHINGLES, IN ORDER FOR THE WARRANTY TO BE GOOD ON ROOF PITCHES LESS THAN A 4/12 PITCH, YOU ARE REQUIRED TO USE TWO LAYERS OF FELT OVER THE ENTIRE ROOF UNDER QUESTION. STARTING WITH AN 18" STRIP ALONG THE EAVE AND CONTINUING WITH FULL 36" WIDE SHEETS OVERLAPING 19" OVER THE PRECEDING SHEET UNTIL THE ENTIRE DECK IS COVERED.

SBCI  
 PST&EST  
 REPORT # 2305  
 CODE COMPLIANCE FOR 2000  
 INTERNATIONAL CODE FOR ONE-  
 AND TWO-FAMILY DWELLINGS